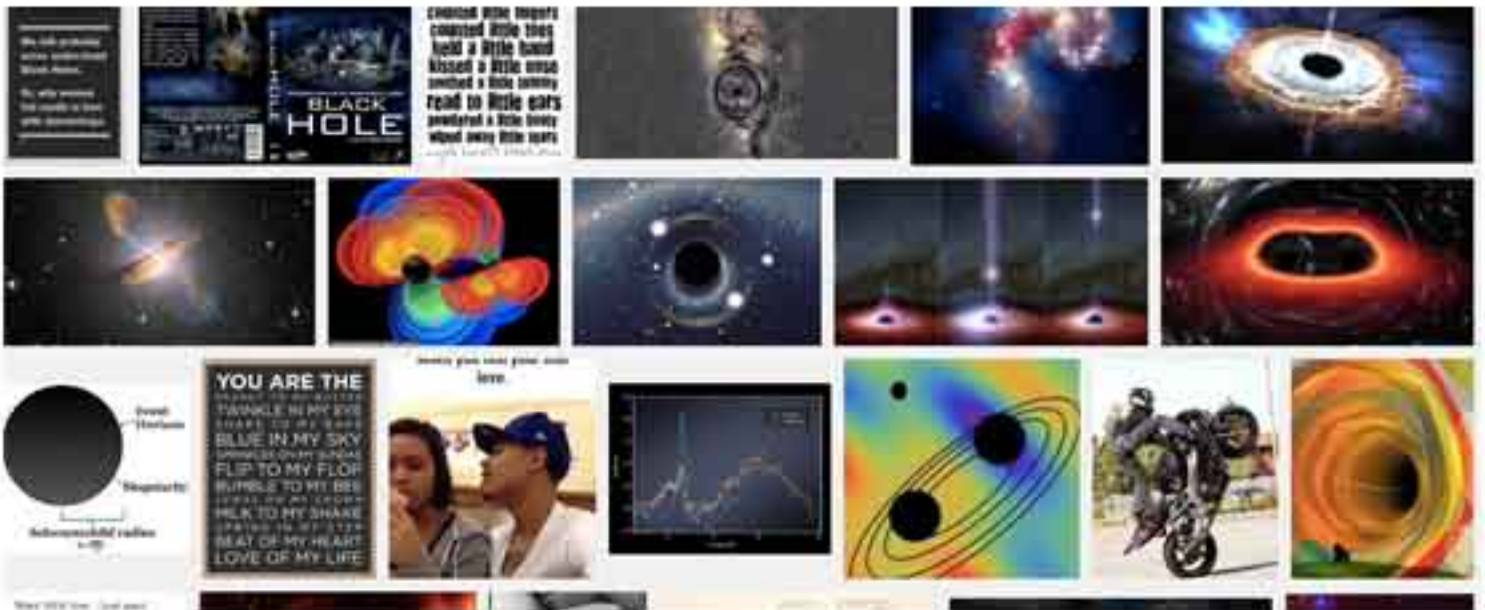


Sarah Pichlkostner

Carry on
role model
is an fictive self optimizieng
Carry on
Let me play among the stars
is an unknow
role model
Swap with it, to go higher
You will have it under your fingernails, it scratch a bit and you will
start to think about to clean it and even when
In other words, hold my hand
it can transform in any character
You will be unvisinble coverd by it and your shadow cant follow you
anymore
it it is an gost
They told me there is living this thing, it can go through every detail
it can talk every languge
It might tell you about your life, your past or maybe about your futhure
In other words, please be true
kay calls me all the time.



Dienstag 29.November 2016 / 16h
Bildhauerei - transmedialer Raum
Seminarraum (D00132), Domgasse 1